

Bulk Rate
 U. S. Postage
P A I D
 Pottsville, Pa.
 Permit No. 370

Boyd R. Strohecker
 W. 5th St.
 Williamstown, Penna.

Independent Coal Review

PUBLISHED MONTHLY BY INDEPENDENT MINERS AND ASSOCIATES BY AND FOR THE INDEPENDENTS OF THE COAL FIELDS.

Vol. 8—No. 7



DECEMBER, 1964

Pottsville, Pa.

Sanitary Water Board Refuses Eight Permits

The Sanitary Water Board has refused to grant mine drainage permits to these applicants:

Cambria Fuel Co., Johnstown for a deep mine of 135 acres in Stony Creek Township, Somerset County. The board said the applicant has not submitted a satisfactory plan of drainage to provide protection to Schrock Run and Stony Creek which are streams and tributaries to Conemaugh River.

Cambria Fuel Co., Johnstown, for a deep mine of 25 acres in Somerset Township, Somerset County. The board decided the submitted drainage plan would not protect Kimberly Run, East Branch and Coxes Creek, which are clean streams.

James Pascaret, Corsica, for a strip mine (100 acres) in Clover Township, Jefferson County. The board said the operation would have an adverse effect on Welch Run and Redbank Creek, the receiving streams.

James Pascaret, Corsica, for a strip mine (40 acres) in the township and county above. The board decided the discharge would have an adverse effect on Runaway Run and Redbank Creek, the receiving streams.

T. R. Stewart & Sons, R. D. #3, Elizabeth, for a strip mine (15 acres) in Stewart Township, Fayette County. The applicant, the board said, did not submit a drainage plan which would protect an unnamed run, Glade Run and Dunbar Creek which flow into the Youghiogheny River.

Says State Sanitary Water Board Unfair

William L. Harger, president of the Sunbeam Coal Corp., in Butler County, charged the state discriminates in its regulation of mine drainage.

Harger renewed his feud with the State Sanitary Water Board when he accused the agency of giving larger coal operations in the commonwealth preferential treatment in regulating their waste drainage.

In pointed language, he said the State Health Department was the culprit in the dispute which began early this year when he could not obtain a permit to operate a coal washery on Slippery Rock Creek.

He charged the department with "bureaucratic bungling, administrative stupidity . . . negligence, carelessness, inefficiency, indifference . . . (and) incompetence" in the affair.

Members of the board sat silently as Harger read his blunt 16-page statement and demanded answers to questions he posed as he outlined his case. He had requested the opportunity to appear.

"We can't answer your questions here and now," said Dr. Maurice K. Goddard, a board member by virtue of his position as state

(Continued on Page Six)

Sanitary Water Board Orders 8 Soft Coal Operations Closed

Eight bituminous coal operators have been ordered by the Sanitary Water Board to "cease and desist" coal operations.

The operators were charged with beginning coal mining operations without a permit from the Sanitary Water Board.

The eight operators and the mining locations are:

Clearfield County: Robert Bailey Estate, Morrisdale, mine in Cooper Township. Elliot Coal Mining Co., Osceola Mills, a mine in Boggs' Township.

Fayette County: Harry Gunderman Coal Co., Confluence, a coal mine in Georges Township. Genovese Coal Co., Uniontown, a coal mine in Nicholson Township.

Jefferson County: R. D. Bagghman, Brookville, a coal mine in Clover Township. Blake Becker, R. D. 2, Reynoldsville, a coal mine in Washington Township.

Indiana County: Arcadia Co., Inc., Punxsutawney, a coal mine in Banks Township.

Clarion County: Hollobaugh Bros. Coal Co., R.D. #1, Mayport, a coal mine in Redbank Township.

Coal Mine Drainage Helpful In Drought

Coal mine drainage, has begun playing a helpful role in the state's drought drama, a role which would be dramatically enlarged if realistically approached.

Three towns—Barnesboro (Cambria County), Blythe Township (Schuylkill County) and Summerville (Jefferson County) have been forced to turn to coal mine drainage because of water shortages.

Barnesboro, which has been using water from an abandoned mine for a number of years, had to turn this fall to another old sealed mine when its original water source began dwindling. Blythe Township and Summerville have resorted to water from strip mine pits.

Even quarries, often the cause of raised eyebrows because of swimming dangers, are playing beneficial roles. Spring Grove (York County) and Lewistown have gone to quarries for emergency water supplies.

"We have asked as many of our technical personnel as necessary to drop other work and concentrate on helping towns in need

(Continued on Page Five)

Record of Royalty Payments Made To Schuylkill County for Coal Mined On County Lands During April and May

Listed below are the royalty payments made to the Schuylkill County Commissioners for coal mined on county-owned lands for the months of April and May of this year.

Independent Coal Review will attempt to report these records of payments two months at a time in each issue until we are current with the reports.

The bulk of the royalties paid go to the respective school districts and the townships or municipalities in which the mining operations are located.

ROYALTIES FOR APRIL

NAME	TONS	AMOUNT
John Manue, Branch	170	\$ 68.00
John Manue, Branch	1284	513.60
Norman C. Shock, Schuylkill	208	123.20
John Butcavage, Blythe	245	98.00
Walter Sherkness, Mahanoy	75	30.00
Andrew Matrishin, Mahanoy	86	34.40
Big Pine Coal Company, Blythe	276	110.40
Maple Spring Coal Company, Reilly	570	204.00
John Manue, Branch	1190	476.00
Walter Whalen, Cass	116	46.40
Norman Otto & Son, Branch	245	98.00
Stephen Dyszel, Butler	157	62.80
Anthony Chukusky, N. Castle	72	28.80
Manuel Simoes, Mahanoy	172	68.80
Joseph Olman, Mahanoy	48	19.20
George Achenbach, Reilly	576	134.00
Joseph Halaburda, N. Castle	100	40.00
William Carl, Branch	880	352.00
Jos. Capriotti, Jr., Branch	110	27.50
Joseph Dalvet, Blythe	40	16.00
Johns Lease Company, Delano	62	25.00
Joseph Hudock, Branch	833	291.55
Joseph Mickatavage, Butler	164	65.60
J. Millard & A. Delinko, Norwegian	1496	598.40
William P. Parker, Reilly	42	16.80
Floyd Koch, Branch	145	58.00

(Continued On Page Seven)

INDEPENDENT COAL REVIEW

Vol. 8—No. 7 December 1964 Pottsville

Published monthly by Independent Miners and Associates by and for the Independents of the coal fields.

Room 406, Masonic Building, Pottsville, Pa.

EDITOR: Clyde L. Machamer.

OFFICERS: Clyde L. Machamer, Reinerton, president; Andrew J. Drebitko, West West Terrace, vice-president; Joseph T. Walacavage, New Minersville, treasurer; James W. Thompson, Tower City, secretary.

EXECUTIVE COMMITTEE: John Bernitsky, Middleport; Henry Bowman, Sacramento; Paul Drenzo, West West Terrace; Robert Doyle, Branchdale; Andrew J. Drebitko, West West Terrace; Clyde L. Machamer, Reinerton; Franklin I. Miller, Tremont; William Parker, Jr., Muir; Leon Richter, Tremont; James W. Thompson, Tower City; Joseph Walacavage, Minersville; Anthony Weisacosky, Pottsville; A. R. Williamson, Valley View.

BENEFICIAL AND WELFARE FUND: Kenneth Heiser, Schuylkill Haven; Clyde L. Machamer, Reinerton; Robert Rissinger, Millersburg.



From The President's Desk

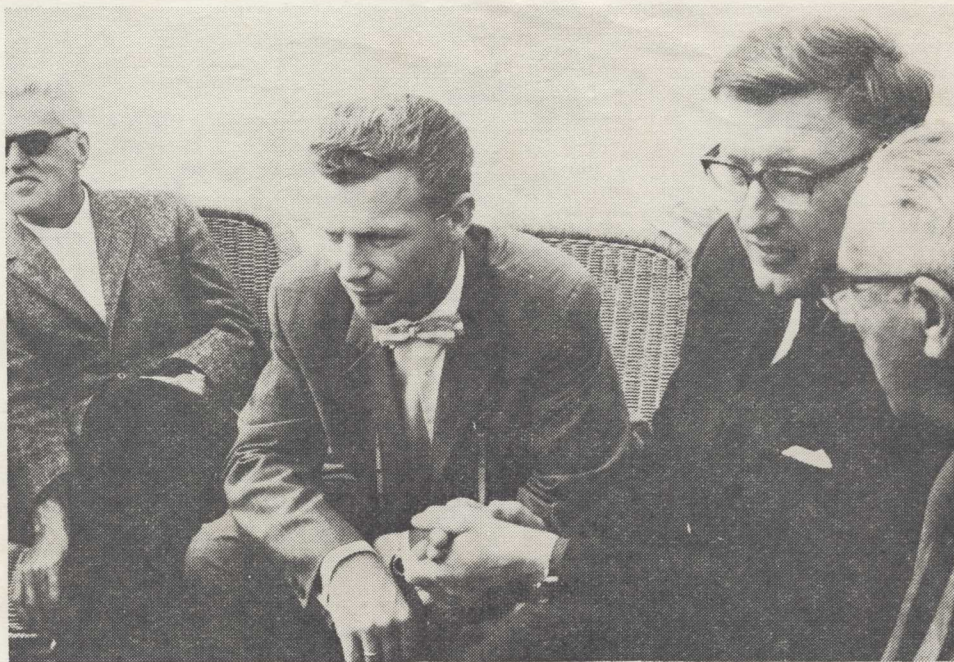
This being our Holiday edition I wish to express my hope for a happy and safe Christmas Season and a prosperous 1965 for all I.M.A. associates, advertisers and friends.

Let us look forward to an expanding and improving Industry which will provide a better living for everyone. Let us not overlook safety factors in any working area in order that disabling injuries, or worse, may be eventually eliminated.

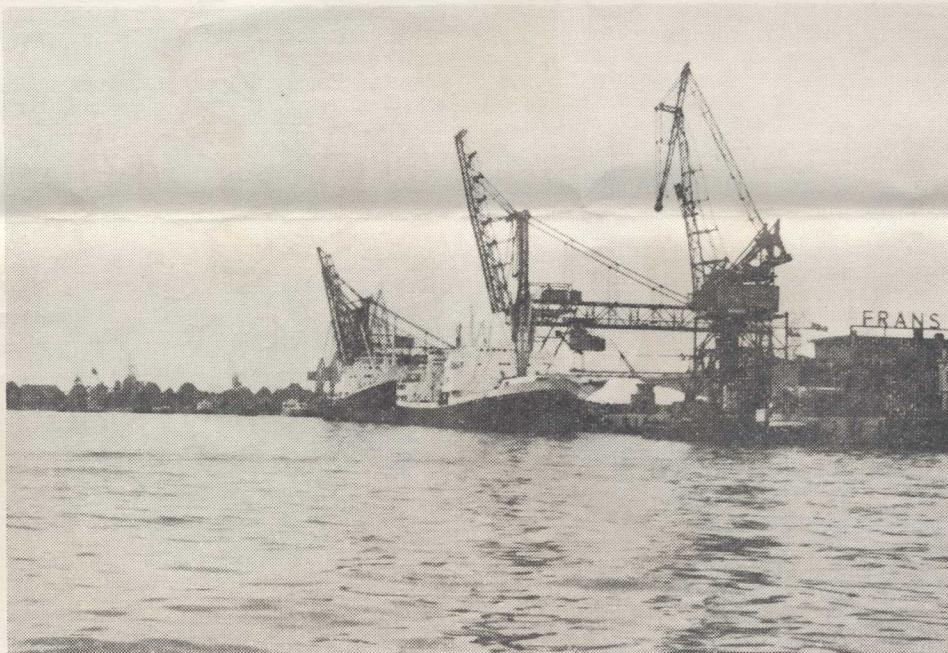
I extend a sincere thanks, also, for the very fine cooperation from all I.M.A. members in matters affecting the Independent Industry. This has helped immeasurably in the many advances I.M.A. has made. This spirit continuing, we will attain the highest goals possible for all our members.

The good fortune realized for our Independent Anthracite Industry has not been achieved through an automatic process, but, rather has it accrued from hard work and perseverance by dedicated people. Any further gains for I.M.A. will only be acquired if we all persist in a determination to advance. I hope this is a firm resolution by everyone for the coming year. Let us look to the future and not reminisce on past gains.

Again my sincere wishes for a fine Christmas and success in the coming year.



HARBOR TOUR . . . On tour of Rotterdam harbor are Joseph Hughes, Robert Moss, J. S. C. Schoufour, Mr. Van Galen representatives of foreign coal firms explaining facilities and locations to IMA representatives.



EVERYTHING THAT IS NEEDED . . . Huge cranes, shipping terminals plus other loading and unloading facilities are shown in this overall view of Rotterdam harbor.

For The Finest In Anthracite Building Equipment

SEE

J. H. DEITER AND SONS

305 E. Grand Ave. Tower City Telephone 647-2746

LEGAL COAL COMPANY

Good Springs, Pa.

Wilmot Heavy Media Clean Coal

Phone OV 2-3624

Dependable Anthracite

FRANKLIN COAL COMPANY

Ravine, Pa.

Telephone 345-8486

CONVEYOR PANS All Popular Makes

Room Conveyor Pans (new) . . . \$29.00 Elevating Conveyor Pans (new) . . . \$32.00

Specify make and model for quotation.

All types of machine work done.

HERMAN BEURY MACHINE SHOP BOG 203 ASHLAND R.D. 1 PHONE 875-2250

SUPERIOR COAL COMPANY

All Sizes of Standard Anthracite

Phone OVerbrook 3-3246

Valley View, Pa.

State Sanitary Water Board OK's Permits for Seven Firms

The Sanitary Water Board has authorized industrial wastes permits for seven firms;

Bethlehem Mines Corp., of Johnstown, received a permit for industrial wastes treatment works at its East Taylor Twp., Cambria County, bituminous coal preparation plant. Silt wastes will be treated and waste water will be reused. There will be no discharge of wastes from this plant.

D. Brewster Bumper Corp., of Larmer, received a permit for treatment works for plating wastes from its North Huntingdon Twp., Westmoreland County, metal plating plant. Discharge after treatment will be to Brush Creek. The treatment works are to be in operation by October 20, 1964.

Allegheny Mineral Corp., of Kittanning, received a permit for treatment works to provide complete treatment of silt wastes discharged to an unnamed tributary of McMurray Run from its Mercer Township, Butler County, limestone processing plant. The treatment works are to be in operation by June 20, 1964.

Morgantown Laundromat, Inc., of Morgantown, received a permit for treatment works to provide complete treatment of laundry wastes to be discharged to Swamp Creek from its Caernarvon Township, Berks County, coin-laundry.

American Chain & Cable Co., of York, received a permit for treatment works to provide complete treatment of plating wastes discharged to Poorhouse Run from its York County, meal plating plant. The treatment works are to be in operation by December 31, 1964.

Sealtest Foods, of Norwich, N. Y., received a permit for treatment works to provide complete treatment of milk wastes discharged to Sinking Creek from its Gregg Township, Centre County, milk receiving station. The treatment works are to be in operation by October 1, 1964.

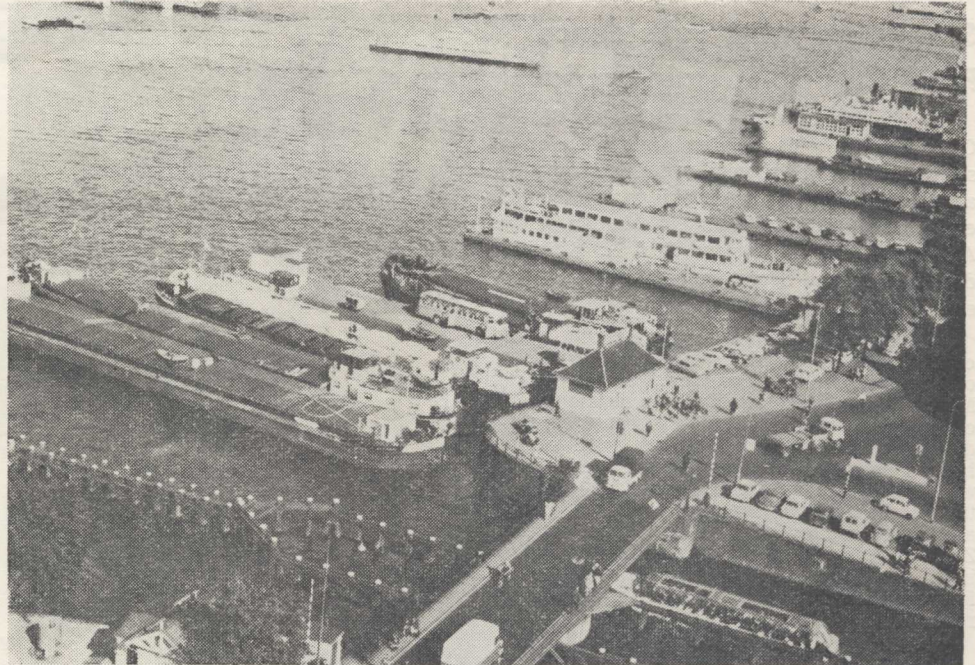
Lehigh Valley Anthracite, Inc., of West Pittston, received a permit for discharge of treated wastes from a silt basin at its Hazleton, Luzerne County, anthracite coal preparation plant to Hazel Creek. The permit also specifies that treated wastes may be discharged to underground mine workings and thence to Nescopeck Creek.

Another First for Independent Coal Review—Color Front Page

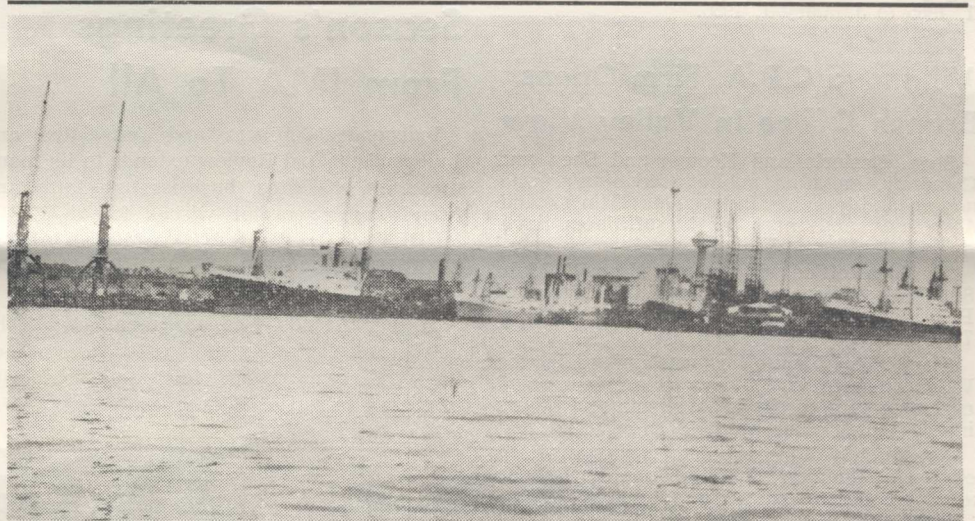
Independent Coal Review is proud to present to its readers its first "color" overlay on the first page of this edition.

Only once in the past did we attempt a color reproduction and that was to stress certain map points showing the location of underground and surface mine fires plus culm bank area on a state level.

In celebration of the holiday season our front page, for the first time, is done in color with Santa Claus prominently displayed.



FACILITIES ARE GOOD . . . Excellent docking, loading and unloading facilities of Amsterdam harbor are shown in this over-all view of area with railroad tracks running directly to dock side.



RIDING AT ANCHOR . . . Sea-going vessels arriving and departing ride at anchor in Amsterdam harbor awaiting port authority approval to move either to docks or out to the ocean.

C. L. MACK
Gulf Oil Distributor
Telephone 695-3172
Tremont, Pa.

TOWER SALES, INC.
Texaco
Petroleum Products
Tower City
Midway 7-2137

PREMIUM STANDARD ANTHRACITE
K & P COAL COMPANY
544-2212
Box 296
Minersville, Pa.

EXPLOSIVES
Hercules-Atlas-Independent
SAMUEL J. BRESSI
Kulpmont, Pa.
Telephones: 373-6411—373-6331

POTTSVILLE—ECONOMY SUPPLY COMPANY
Steel bars, V-belts and sheaves, belting, boring bits, wire rope, safety cans, Carbide, cable clips, brattice cloth, neoprene coats, pants and hats, safety helmets, cutting edges, files, saws, shovels, picks, axes, grease cups, hose, hoists, jacks, lacing lamps, packing, respirators, steel sheets, bolts, cap screws, fire extinguishers.
PHONE 622-6292 622-7631
At The Mount Carbon Arch—Pottsville

INDUSTRIAL SUPPLIES
Charles C. Morris Inc.
Box 45-A, Pottsville, RD 1, Penna.
Call 622-8413 for prompt service Bethlehem wire rope, Rustoleum paints, bearings and oil seals, air compressors, plastic pipe, pipe fittings, rubber hose and fittings, machine bolts and capscrews, mine roof bolts, packings, V-belts and sheaves, wire cloth and screens, lamps, fire extinguishers, roller chain and sprockets, conveyors, vibrator screens, oil and greases, and general supplies.

State Coal Mine Subsidence Fund On Self-Sustaining Basis

For the ten months ending October 31 the Coal Mine Subsidence Fund has been on a self-sustaining basis, with premiums meeting administrative expenses. This was announced by Dr. H. B. Charmbury, Chairman of the Anthracite and Bituminous Coal Mine Subsidence Board and Secretary of Mines and Mineral Industries.

As a result of a flushing project now being conducted in the Hyde Park area of the City of Scranton by the Department of Mines and Mineral Industries, mining engineers employed by the Fund are studying subsurface conditions with the view of reducing the extra-hazardous zone ratings. Such reductions would lower the premiums considerably and thus make the program more readily available to economically distressed home owners. Zone grade revision studies will be conducted in Wilkes-Barre and vicinity in the near future to determine whether rates might be reduced for that zone.

In accordance with Section 7 of the Anthracite and Bituminous Coal Mine Subsidence Fund Act (484) 1961, the Board governing the conduct of the Fund at a quarterly meeting held November 12, 1964, approved the existing premium rates for the period January 1, 1965 to January 1, 1966.

Villanova C.P.A. Firm Opens Branch Office In Valley View

Shea, Oesterle and Keough and Shea and Company, certified public accountants, who act as auditors for Independent Miners and Associates and many of its affiliates have opened an office in Valley View.

The local office will be located on W. Main St., Valley View with a mailing address of P. O. Box 302 Valley View and the telephone, 717-682-9521.

The Valley View office was opened by the Villanova firm to provide better, faster and easier service for its IMA clients and others in the Valley View area.

The branch office is under the supervision of Joseph F. Oesterle with John R. Benner available for consultations.

The office will be open Wednesdays from 10:30 a. m. to 8:30 p. m. until June of 1965 when general office hours will be from 9 a. m. to 5 p. m. Monday through Friday and from 7 to 9 p. m. Tuesday and Thursday.

HOWELLS TIRE SERVICE

Distributor Kelly - Springfield Tires
Recapping & Vulcanizing

Telephone 622-0827
Pottsville, Pa.



ON FOREIGN SOIL . . . William Parker and Robert Parry, left to right, representatives of Swatara Coal Company enjoy a smoke on arrival at Amsterdam airport following jet flight from U. S.

Season's Greetings From IMA To All

Independent Miners and Associates and Independent Coal Review extends to its many members, affiliates, business associates and friends most cordial wishes for a VERY MERRY CHRISTMAS AND A MOST HAPPY, SUCCESSFUL AND PROSPEROUS NEW YEAR.

To our friends who are members of the Jewish religion we extend most sincere wishes for good health, good luck and prosperity of their Festival of Lights.

ROSINI COAL CO. CARBON RUN COLLIERY

"Anthracite Prepared Right"

S. 5th St., Shamokin, Pa.

Phone 648-5793

LAUBENSTEIN MANUFACTURING COMPANY

Precision perforated screens for shakers and vibrators in all metals. Flat pickers, flights and troughs made to order.

122 South Third St.

Ashland, Pa.

Telephones—Ashland 875-2151—875-2152

TALLMAN SUPPLY CO.

OLIVER WHEEL & CRAWLER & TRACTORS & LOADERS
INGERSOLL-RAND PUMPS—COMPRESSORS—AIR TOOLS
ALUMINUM & PLASTIC PIPE—VICTULIC COUPLINGS
OLIVER & WISCONSIN POWER UNITS & GENERATORS
LINCOLN ELECTRIC WELDERS—SMITH TORCHES
BEARINGS & TAKE-UPS—REDUCERS & COUPLINGS
CHAIN & SPROCKETS—SHEAVES & BELTING

Tower City, Pa.

Call 647-2123



"Meet John Walaitis and his Caterpillar electric set. John, together with his sons, George and Jack, operates a Coal Mine near Branchdale, Pennsylvania. The CAT is a D320 - 40 KW electric set. It provides power for conveyors, pump, drag shovel, and fans with a total connected load of 52.5 HP."

Cat & Caterpillar are Registered Trademarks of Caterpillar Tractor Co.

NEW & USED
CATERPILLAR
ELECTRIC SETS
WHEEL LOADERS
CRAWLER LOADERS



FRACKVILLE
Phone 874-3560
POTTSVILLE
Phone 622-7207

State Water Board Arrests Mt. Carmel Man—No Permit

The Sanitary Water Board has announced the arrest of a Mt. Carmel man for operating a (deep) coal mine without first obtaining a permit for approval of a plan of drainage and disposal of industrial wastes.

Frank A. Chango, 230 South Oak St., Mt. Carmel, owner of the Chango Coal Co., Northumberland County, was arrested Nov. 17 by Trooper Stephen Pawlak, Pennsylvania State Police, assigned to the Health Dept., Harrisburg. He was arraigned before Justice of the Peace Jonh J. Bartko, Shamokin, where he was released after posting a \$500 bond. His hearing was waived until the next term of Court of Quarter Sessions.

The Oxford Royal Mushroom Products, Inc., Kelton, Chester County, was arrested on Nov. 12 by Trooper Stephen Pawlak for the malfunctioning of their disposal system at their mobile home park in Kelton. Fred P. McCarthy, Kennett Square, Philadelphia, general manager of the company, was brought before Justice of the Peace Marshall A. Buchanan, Oxford posting a \$200 property bond pending the outcome of a hearing on December 15.

Coal Mine Drainage—

(Continued from Page One)

water" State Health Secretary Dr. Charles L. Wilbar said.

He said laboratory personnel, who run chemical and bacteria tests on all emergency water supplies, have been instructed to "drop everything" when samples of emergency water supplies arrive.

"These towns want to know immediately the quality of their emergency water," Dr. Wilbar said. "Immediately" in our situation means only the minimum time it takes to run the tests."

Here's what happens when a parched community pushes the "need water" panic button: Health Department sanitary engineers investigate the emergency water supplies available in the area, take samples, make sanitary surveys and arrive at the best solution, as far as the protection of the consumer is concerned.

Emergency water supplies have to be filtered and chlorinated. Chlorination alone is not much help if the water is not clear. Bacteria imbedded in the solids often escape the bactericidal activity of the chlorine.

PUC To Hold Hearings On Use "Dead Man" Safety Device

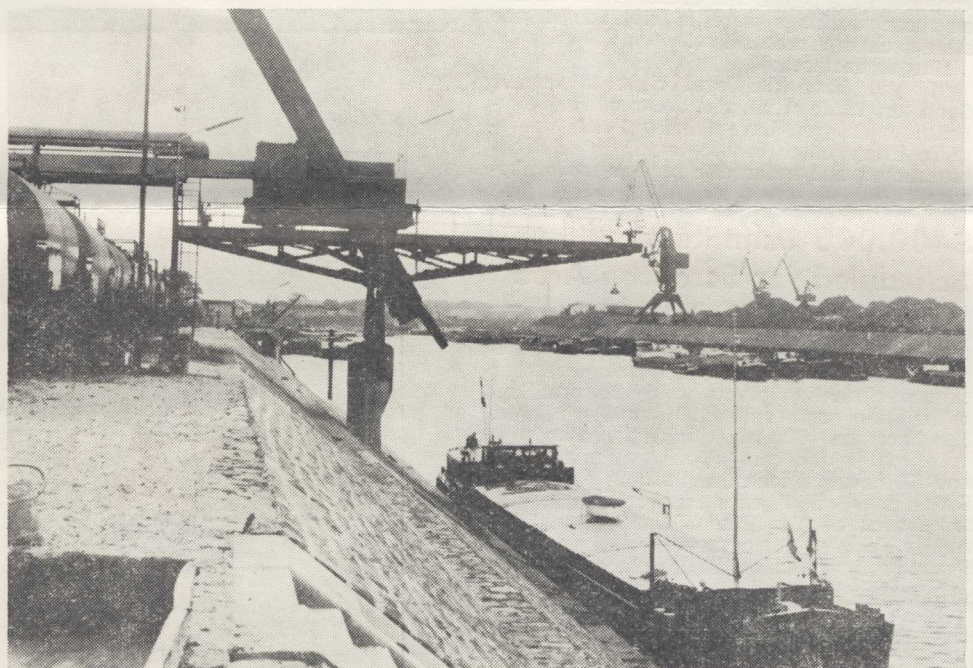
The Public Utility Commission said it will open hearings in Harrisburg Dec. 16-17 to determine whether all railroads in the state should use a "deadman" safety device on locomotives operated without a fireman or an extra crewman.

The PUC ordered an investigation after Charles J. Sludden, chairman and legislative representative of the State Brotherhood of Railroad Trainmen, contended that the "deadman" device or equivalent would minimize hazards in event the engineer suddenly gets ill or dies.

The device, now in use by some railroads, is a braking pedal or lever which stops a locomotive automatically when an engineer



ANTHRACITE STOCKPILED . . . Examining stockpile of Anthracite at Frankfort, Germany, military installation are Colonel Langan, procurement officer; Mr. Joseph Hughes, Mr. Van Galen.



SNORKEL TYPE . . . Outside view of part of the Rhine river loading facilities at Manheim showing snorkel type chute which drops coal into barges and eliminates excessive breakage.

becomes physically incapacitated and unable to control the engine.

Sludden singled out the Pittsburgh and Shawnut Railroad as one which operates locomotives without the "deadman" control or an extra crewman.

"The public and train crewmen are placed in jeopardy in event the engineer is stricken in locomotives without a second crewman or the deadman control," he said.

KOCHER COAL COMPANY

**THE MOST MODERN
PREPARATION PLANT
IN ANTHRACITE**

Valley View OV 2-3181

LACKAWANNA CASUALTY COMPANY

CLAIMS DIVISION

JOHN L. MADDEN

Mt. Carmel, Pa.

345 South Oak Street

Telephone: Mt. Carmel 339-2551

Says State Sanitary—

(Continued From Page One)

secretary of forests and waters. "And we're not going to argue with you."

Harger was ordered by the board last August to stop operations at his coal washery after state inspectors blamed acid drainage from the workings as the cause of a fish kill in Slippery Rock Creek.

After a series of conferences, arguments and correspondence on developments—including his arrest in August on a charge of failing to comply with the cease and desist order—Harger appeared before the board last month.

He was granted a permit to operate the washery on the condition that certain safeguards be taken to prevent further acid wastes being discharged into the creek.

The board was presented a three-paragraph report yesterday saying that Sunbeam was making "satisfactory progress" in complying with the conditions of the permit.

Harger told the board:

"Gentlemen, I agreed to certain conditions in the Sunbeam permit last month only because they were forced on me . . . and because it was obvious that I had no other choice.

"We are complying with those conditions and will continue to do so to the best of our ability unless and until they are removed or determined to be illegal."

He then produced aerial photographs taken of other coal operations across the state and contended the refuse and drainage procedures at these workings were in violation of the state's clean streams law.

Harger declared:

"If you have the legal right to require Sunbeam to do what you are requiring Sunbeam to do, you have the legal duty to require every other coal operator in both the bituminous and anthracite regions to do likewise."

\$400,000 Culum Refuse Plant Scheduled for Scranton Area

A \$400,000 coal refuse processing plant designed to reclaim one million tons of culm will be put into operation soon at Scranton by the Commonwealth to determine whether culm reclamation plants would be practical in the State's anthracite and bituminous fields. The Scranton pilot plant is designed to produce coal which can be used commercially, and fill material for mine flushing programs. State funds will finance the work which was researched at The Pennsylvania State University. Any money realized from the Scranton operation will be placed in the General State Fund.

D & Z COAL COMPANY HEAVY MEDIA PROCESS DEEP MINED COLLIERY COAL

Telephone 644-0425
P. O. Box 351
Shamokin, Pa.



YOUR ONE STOP SOURCE FOR HOSE OF ALL TYPES (AIR, WATER, OIL, PAINT, ACETYLENE) AND HOSE COUPLINGS . . . IN STOCK!!!

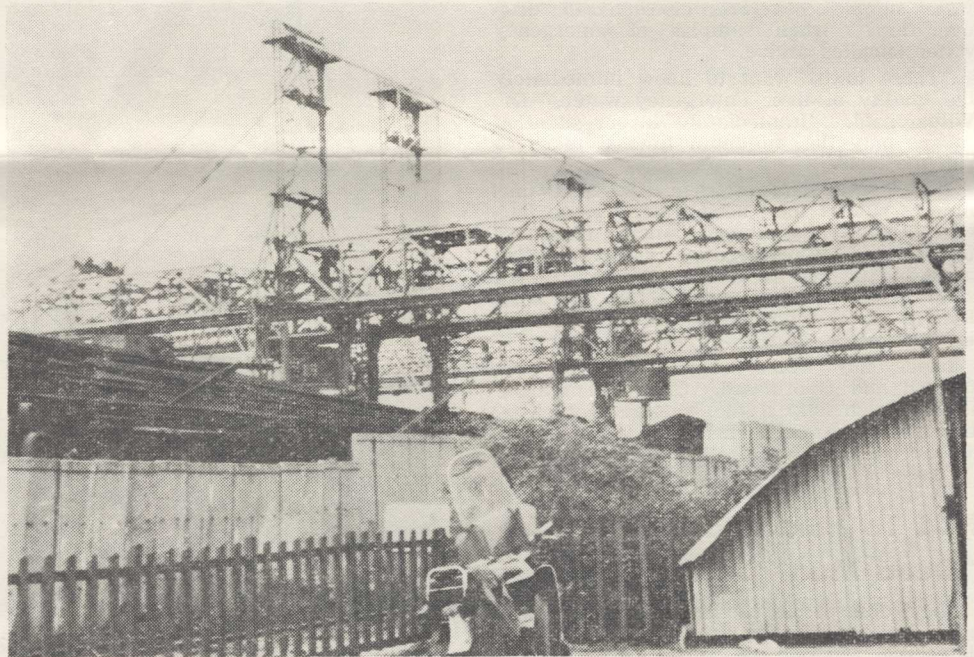
HOSES MADE TO YOUR SPECIFICATIONS IN OUR SHOP.

EXCLUSIVE DISTRIBUTOR FOR DAYCO
COG BELTS, MULTIPLE DRIVE &
FHP BELTS & SHEAVES.

13th and Laurel Sts. Pottsville
Telephone 622-4330



MUST BE RE-SCREENED . . . Examining coal that had to be re-screened—NOT INDEPENDENT COAL—at stockpile near Manheim, Germany, are, from left: Joseph Hughes, William Parker, Robert Parry and Mr. Klinkenberg.



HUGE CRANE . . . Portion of overhead crane assembly at Amsterdam docks part of huge mechanism used to both load and unload coal and other products from vessels.

Flexible New Air Tubing For Mine Ventilation, Wire Reinforced, Can Be Used For Discharge or Suction—2 (Two) Sizes Are On Hand.

6"x15 Ft. and 14" x 16 Ft. Can Be Coupled To Make Any Continuous Length.

PAB'S SUPPLIES

KULPMONT, PENNA.
Phone 717-373-2703 Day or Night

Phones 648-5736, 648-5737, 648-5738



MINKER STEEL PRODUCTS CORP.

New Steel Warehouse
LUKS FIDLER ROAD
SHAMOKIN, PA.

MINING EQUIPMENT

PLUMBING SUPPLIES

Structural Steel, Rounds-Flats-Squares,
Plates-Sheets-Pipe
RR Track 12-90 Wiping Cloth
Nails-Culvert Pipe, Angles, Channels,
Splice Bars & Bolts

"Call Us For Your Steel Requirements"



JAMES J. DELANEY

Congratulations Marshal Delaney

Independent Coal Review and Independent Miners and Associates extends most heartfelt congratulations and wishes for good luck to "one of our own", U. S. Marshal James Delaney of Pottsville.

Delaney, now serving as the U. S. Marshal for the Eastern Federal District with headquarters in Philadelphia is a former affiliate of the independent coal industry in the Schuylkill County area.

Attending the swearing in ceremonies in the Philadelphia Federal Court House were Clyde L. Machamer and James W. Thompson along with W. Price Parker and William Parker.

Best Wishes To New Head of Penna. Chiefs of Police Asso.

Independent Miners and Associates offers sincerest congratulations to Chief of Police Joseph Simononis of Girardville on his election as president of the Pennsylvania Chiefs of Police Association.

We extend to President Simononis our best wishes for a successful tenure of office.

Remaly Manufacturing Co., Inc.
Perforated Metal Screens of All Descriptions D-dent Shaker and Flat Picker Plates Patented Section Mine Troughs.
Made To Order
 211 Cedar St. Tamaqua, Pa.
 Phone: Tamaqua 668-0320—668-0321

Wheat Electric Cap Lamps
NATIONAL MINE SERVICE COMPANY
Anthracite Division
 7th & Maple St. Mount Carmel, Pa.
 Tel. 339-3210

Wire Rope	Safety Caps
Tamping Plugs	Flame Safety Lamps
Vent Tubing	Pipe, Hose, Fittings
Plastic Pipe	Brattice Cloth
Kennametal Bits	Safety Equipment
Mine Supplies	First Aid Supplies

Record Of Royalty Payments—

(Continued from Page One)

NAME	TONS	AMOUNT
Frank Souchak, Delano	10	4.00
Klimas Brothers, Blythe	706	282.40
Floyd Koch, Branch	3109	1,243.60
Norman Otto & Son, Branch	268	107.20
J. Bombar & M. Molochick, Norwegian	110	44.00
Donald Metzinger, Butler	427	170.80
Hnatishion & Pitel, Norwegian	150	60.00
William Horwath, N. Castle	220	88.00
Fegley Brothers, Delano	100	40.00
Joseph Dyszel, Butler	250	100.00
Joseph Swilp, Blythe	450	180.00
William P. Parker, Reilly	268	107.20
William P. Parker, Reilly	206	104.00
Charles Renninger, E. Norwegian	24	9.60
Canfield Construction Co., Blythe	422	168.80
Frank Weihrauch, Tremont	84	33.60
High Heat Coal Company, Frailey	906	362.40
High Heat Coal Company, Frailey	2050	820.00
Leo Yob, Blythe	305	122.00
Joseph Gavalis, Blythe	42	16.80
Frye Brothers, Blythe	48	19.20
Chester Vockie, N. Castle	96	38.40
Frank Honyara, Cass	80	32.00
John Manue, Branch	1010	404.00
John Manue, Branch	3238	1,295.20
Ridge Stripping Co., Norwegian	1370.62	548.25
J. D. S. Coal Co., Blythe	147	58.80
John Butcavage, Blythe	198	79.20
Anthony Chukusky, N. Castle	84	33.60
Norman Otto & Son, Branch	332	132.80
Edward Siminitus & Brothers, Cass	144	86.40
Norman Otto & Son, Branch	323	129.20
TOTAL		\$10,527.90

ROYALTIES FOR MAY

William P. Parker, Reilly	168	\$ 67.20
Frank Zimmerman, Tremont	114	45.60
George Achenbach, Reilly	504	126.00
Andrew Matrishin, Mahanoy	90	36.00
Joseph Hudock, Branch	875	306.35
Allen Potts, Tremont	39	15.60
Joseph Swilp, Blythe	571	24.80
Joseph Swilp, Blythe	571	228.40
Anthony Chukusky, N. Castle	360	144.00
William Carl, Branch	1088	239.13
William Carl, Branch	1088	196.07
Norman Otto & Son, Branch	290	116.00
Norman Otto & Son, Branch	252	100.80
Norman Otto & Son, Branch	288	114.80
Ridge Stripping Co., Norwegian	1610	644.22
Hnatishion & Pitel, Norwegian	212	84.80
Stine & Moyer, Reilly	441	176.40
Mrs. Dan'el Skripnek, Blythe	32	12.80
Maple Spring Coal Co., Branch	462	184.80
Jos. Capriotti, Branch	144	36.00
Big Pine Coal Co., Blythe	288	115.20
Joseph Gavalis, Blythe	74	29.60
John Butcavage, Blythe	184	73.60
Canfield Constr. Co., Blythe	546	218.40
Canfield Constr. Co., Blythe	443	177.20
William P. Parker, Reilly	216	86.40
Adam Skrobak, Norwegian	36	21.60
Gilberton Coal Co., Butler	325	130.00
Frank Souchak, Delano	15	6.00
Joseph Olman, Mahanoy	42	16.80
Stanley Lazaravage, Mahanoy	46	18.40
High Heat Coal Co., Frailey	1950	780.00
High Heat Coal Co., Frailey	522	208.80
Joseph Millard, Norwegian	1550	620.00
Frank Honyara, Cass	100	40.00
Fegley Brothers, Delano	50	20.00
Walter Whalen, Cass	160	64.00
J. Bombar & M. Molochick, Norwegian	95	38.00
Charles Renninger, E. Norwegian	8	3.20
Joseph Mickatavage, Butler	226	90.40
John Manue, Branch	2029	811.60
Norman C. Schock, Schuylkill	440	176.00
Frank Weihrauch, Tremont	144	57.60
Joseph Halaburda, N. Castle	120	48.00
Klimas Brothers, Blythe	729	291.60
Manuel Simoes, Mahanoy	151	60.40
Floyd Koch, Branch	208	83.20
Floyd Koch, Branch	2074	829.60
William Horwath, N. Castle	264	105.60
Chester Vockie, N. Castle	99	39.60
Joseph Dyzel, Butler	265	106.00
Stephen Dyszel, Butler	164	65.80
Frank Zimmerman, Tremont	84	33.60
TOTAL		\$ 8,365.97

\$1,000,000 Natural Gas Line From Pottsville-Mt. Carmel Open December 1

A natural gas pipe-line, advancing from Pottsville to Mt. Carmel at an estimated cost of a million dollars, is expected to be completed and in operation by Dec. 1.

The gas that will flow through the lines comes from wells in Texas and Oklahoma. It is distributed by the Texas Eastern Transmission Company, and is scrubbed, cleaned and "dried" at its source. Upon completion of the purifying process it is piped eastward with pumping stations established at points along the way to maintain the pressure.

The Penn Fuel Gas Co., Inc., Pottsville, is one of the three subsidiaries on the main supply line in this region. The other two are at Ashland and Mt. Carmel.

Glenn L. Butler Sr., manager of the Penn Fuel Gas firm at Pottsville, said there are 22 subsidiaries in the entire vast system.

To serve communities the natural gas is tapped from the main transmission line. At Pottsville it is tapped and distributed to 4,000 commercial and domestic customers.

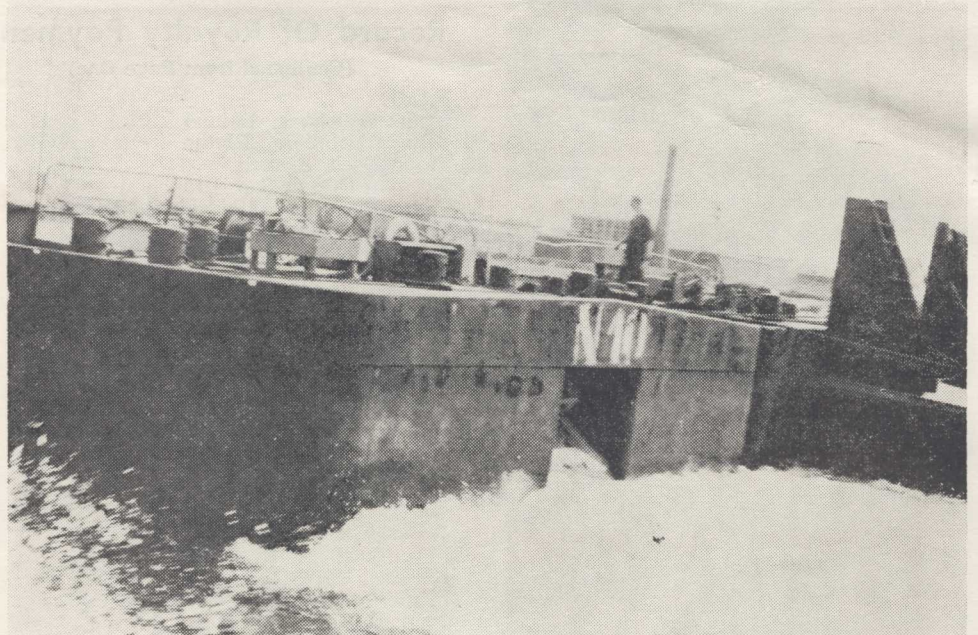
It is used for heating, refrigeration, air conditioning and cooking.

Butler explained that the plan to extend the line from Pottsville to Mt. Carmel was prompted by the demand for natural gas by diversified industries.

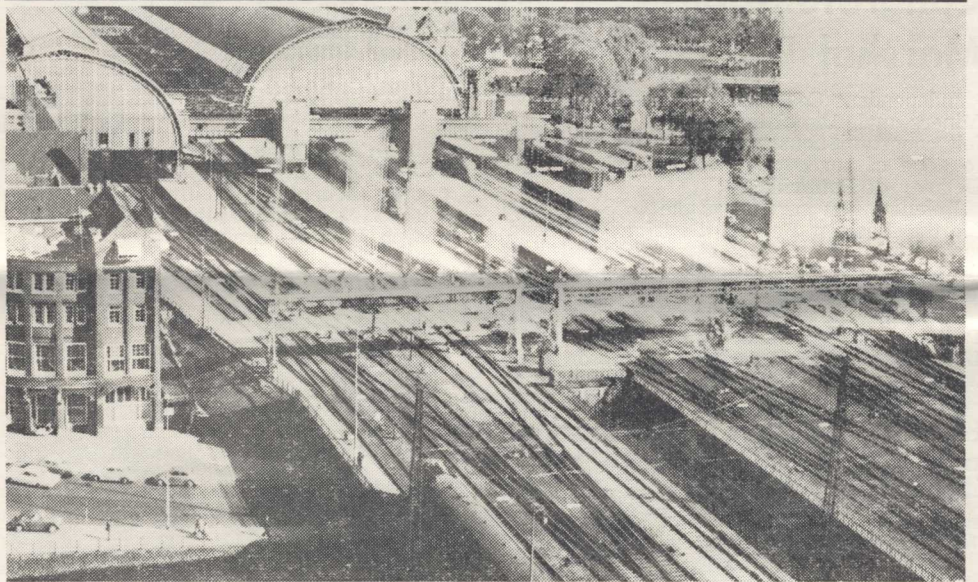
He said three industries in the Frackville Industrial Park site are interested and the industrial development program at Mt. Carmel considers it essential in carrying out plans for industrial advancement.

The pipe-line from Pottsville to Frackville, moving northward along Highway Route 61, is eight inches in diameter. From Frackville to Mt. Carmel it will be reduced to a six-inch line and from there to the industrial parks it will be cut down to a four-inch line.

Butler said interest expressed by the Seal-test Division of National Dairies in natural gas triggered the decision to advance the lines into the Mt. Carmel area.



LATEST DESIGN . . . New type barge used to haul coal on Rhine river in Germany is pushed to dock side at Rotterdam harbor for cargo consigned to other European cities on route of Rhine.



MANY TRACKS . . . Railroad facilities adjacent to Amsterdam harbor utilized for land transportation of coal and other commodities received from over-seas.

I. KROP AND SONS IRON AND STEEL MINE-MILL SUPPLIES

OFFICE AND YARD
Pottsville, Pennsylvania

Minersville	Pottsville
544-3416	622-0730

STROHECKER COAL BREAKER Menzie Heavy Media Coal

Telephones
ENdicott 2-8253 or MIDway 7-9667
Elizabethville, Pa.

*Merry Christmas
and a
Prosperous New Year*

HAVE MINE SUPPLIES/WILL SELL

Tremont Hardware Company

Tremont, Pa.

Phone 695-3173

WE ARE PROUD OF SERVING THE MINING TRADE

WITH THE RIGHT EQUIPMENT FOR THE RIGHT JOB